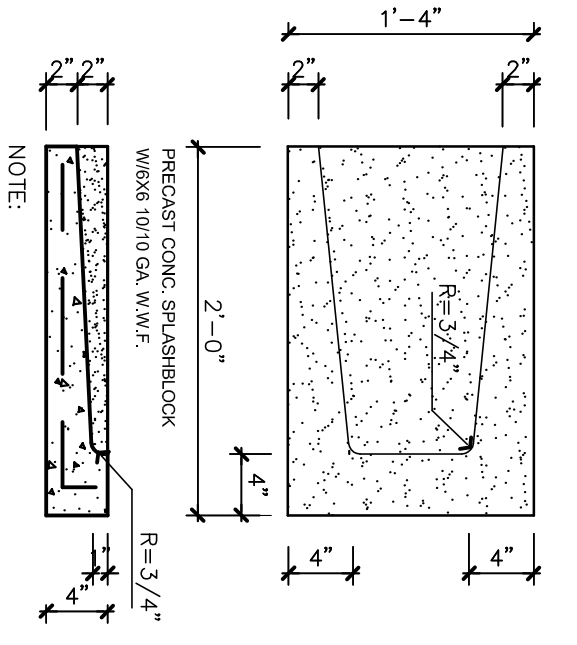
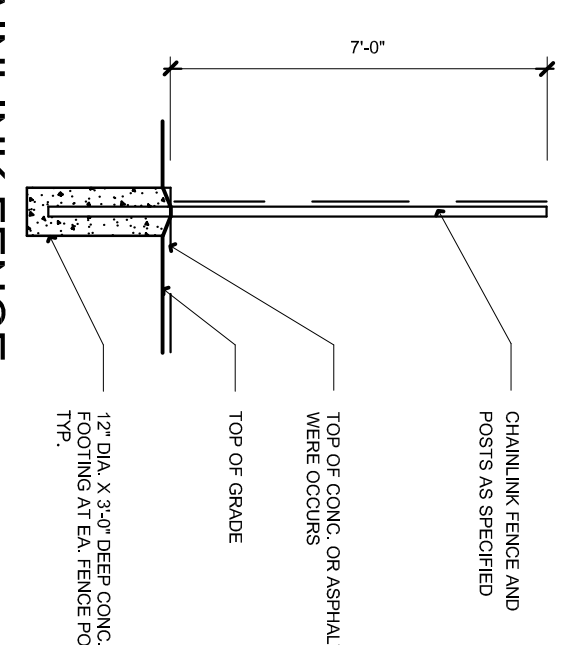


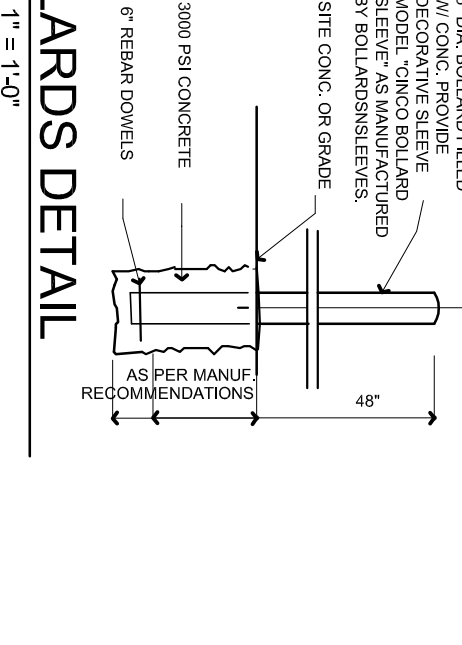
2 H/C PARKING SIGN
SCALE: 1" = 1'-0"



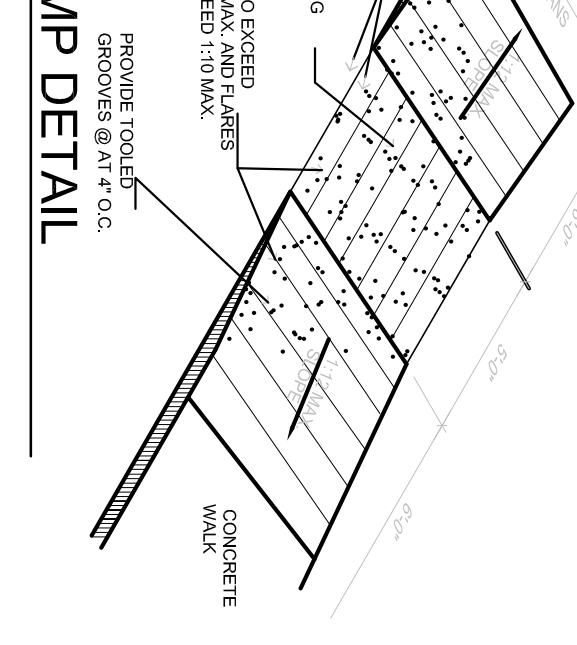
3 SPLASH BLOCK DETAIL
SCALE: 1" = 1'-0"



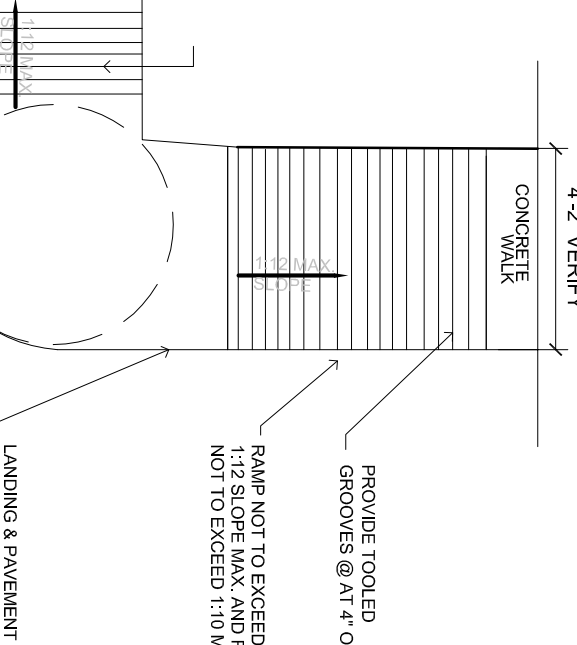
4 CHAINLINK FENCE
SCALE: 1" = 1'-0"



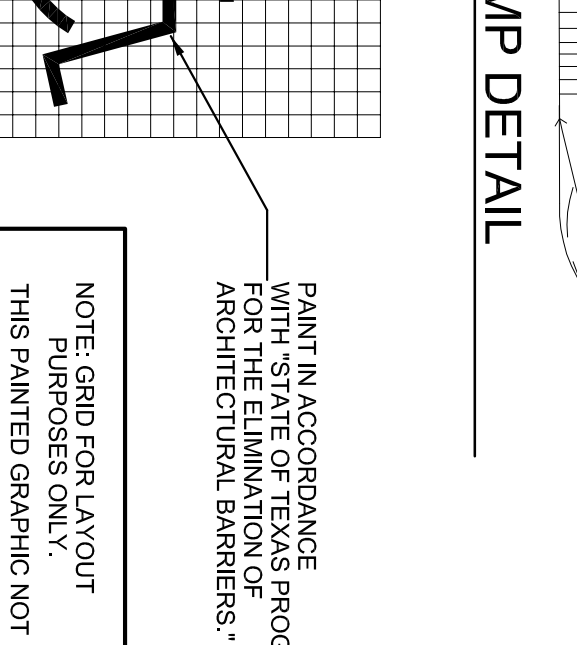
5 BOLARDS DETAIL
SCALE: 1" = 1'-0"



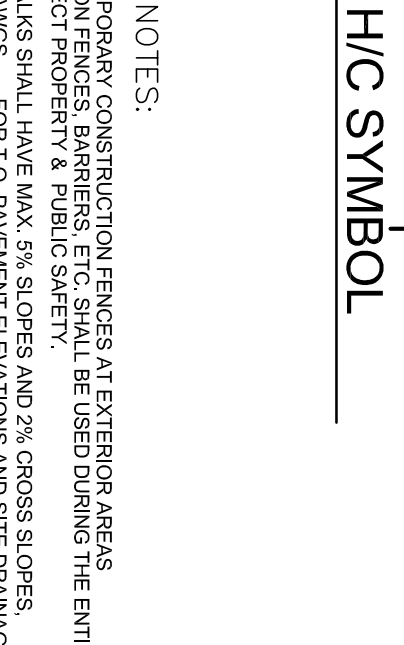
6 RAMP DETAIL
SCALE: 1" = 1'-0"



7 RAMP DETAIL
SCALE: 1" = 1'-0"

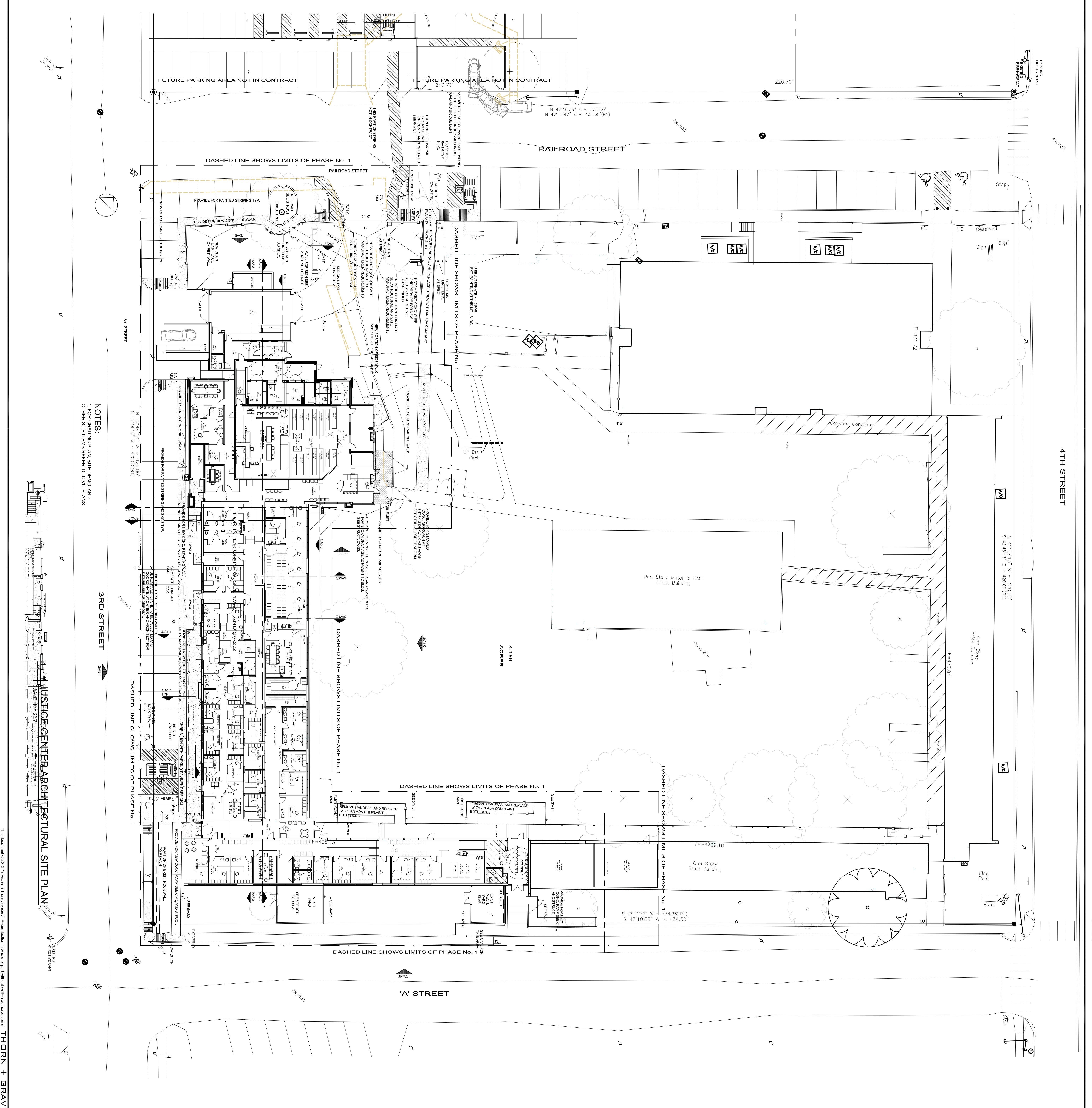


8 PTD. H/C SYMBOL
SCALE: 1" = 1'-0"

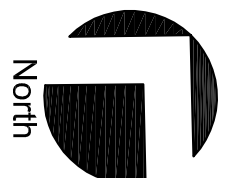


SITE PLAN NOTES:

- CONSTRUCTION FENCES, BARRIERS, ETC. SHALL BE RELOCATED DURING THE ENTIRE CONSTRUCTION PERIOD.
- SEE CIVIL DRAWINGS FOR FINISH GRADE, ELEVATIONS AND SITE DRAINAGE.
- NEW CONC. WALKS SHALL RECEIVE A METALLIC BROOM FINISH.
- CONCRETE FINISHING SHALL BE IN ACCORDANCE WITH THE CONTRACT.
- PROVIDE A SMOOTH TRANSITION BETWEEN NEW AND EXIST. ASPHALT.
- UNLESS NOTED OTHERWISE ON THIS SHEET, ALL WORK OUTSIDE THE LIMITS OF PHASE No. 1 SHALL BE NOTED ON PLANS BY NOT IN CONTRACT.



<p>THORNGRAVES ARCHITECTS PLANNERS INTERIORS 105 MONTECLAIR • ALAMO HEIGHTS, TX 78209 • PHONE: 210-222-0154 • FAX: 210-222-0155</p>	<p>WILSON COUNTY CRIMINAL JUSTICE CENTER EXISTING CAMPUS BUILDING RETROFIT & FINISH-OUT 1103 4TH. STREET, FLORESVILLE, TX. 78114</p>	<p>North</p>
	<p>NO. 08-06-2013 REVISED DATE 08-06-2013 DATE 07/19/2013 PROJECT NO. 1221</p>	
<p>PRELIMINARY FOR PRICING ONLY</p>	<p>AS NOTED</p>	<p>SHEET NO. A1.0</p>



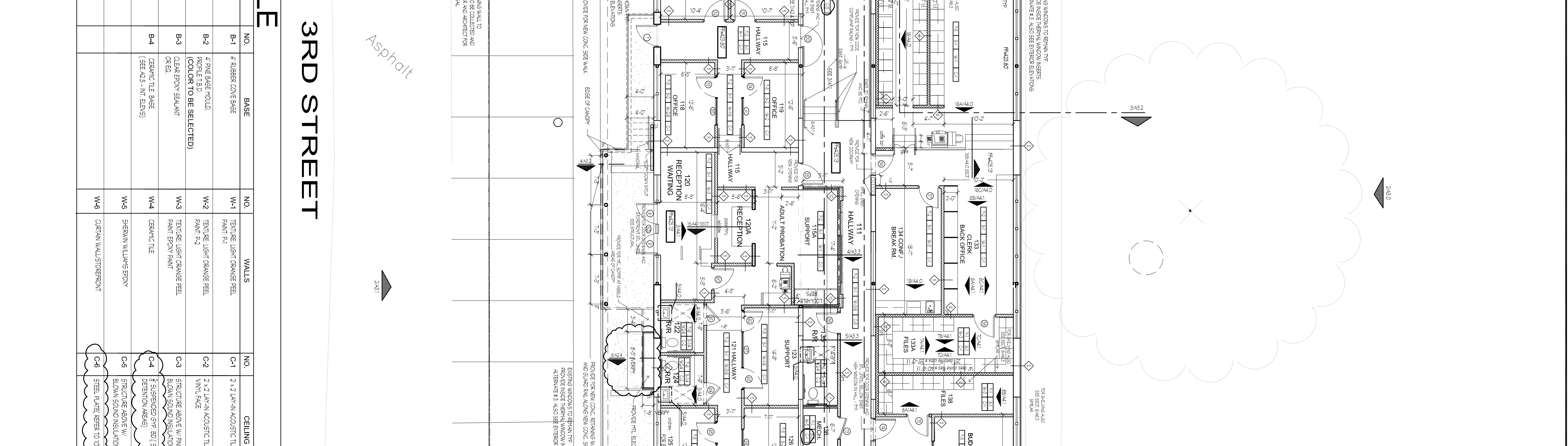
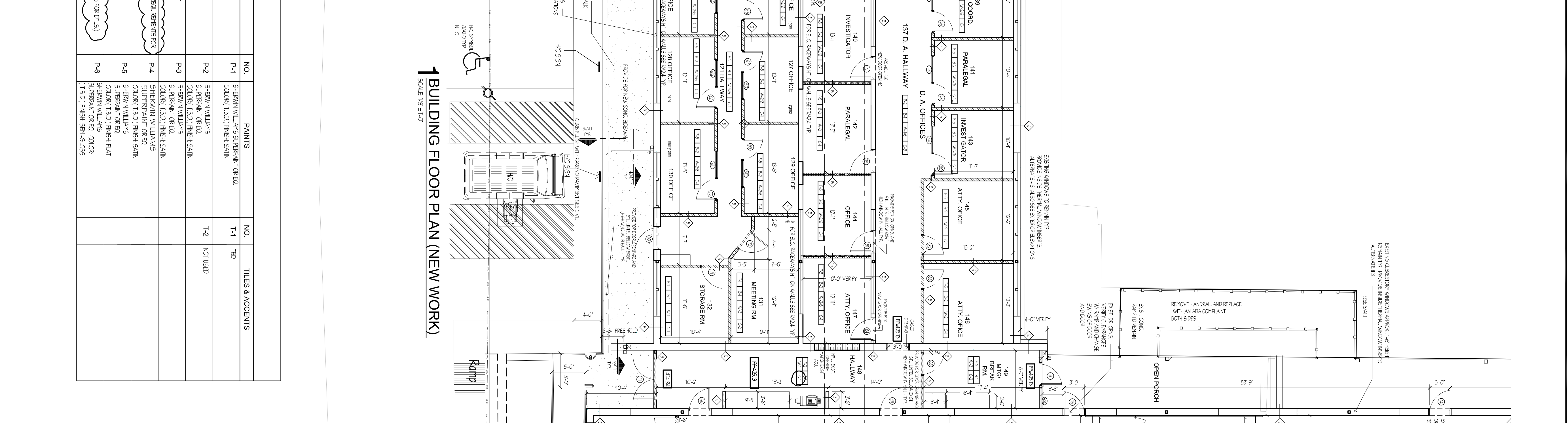
WILSON COUNTY
CRIMINAL JUSTICE CENTER
 EXISTING CAMPUS BUILDING RETROFIT & FINISH-OUT
 1103 4TH. STREET, FLORESVILLE, TX. 78114

THORN GRAVES
 ARCHITECTS PLANNERS INTERIORS
 105 MONTCLAIR • ALAMO HEIGHTS, TX. 78209 • PHONE: 210-222-0134 • FAX: 210-222-0156

NO.	REVISIONS/DATE
A03	06-26-2013
A02	06-26-2013
A01	06-26-2013

PRELIMINARY FOR PRICING ONLY
 DRAWING NO: MS 1221
 CHECKED: LAT
 DATE: 07/19/2013
 SCALE: AS NOTED
 DRAWING TITLE: 3RD STREET FLOOR PLANS

SHEET NO.: **A2.1**



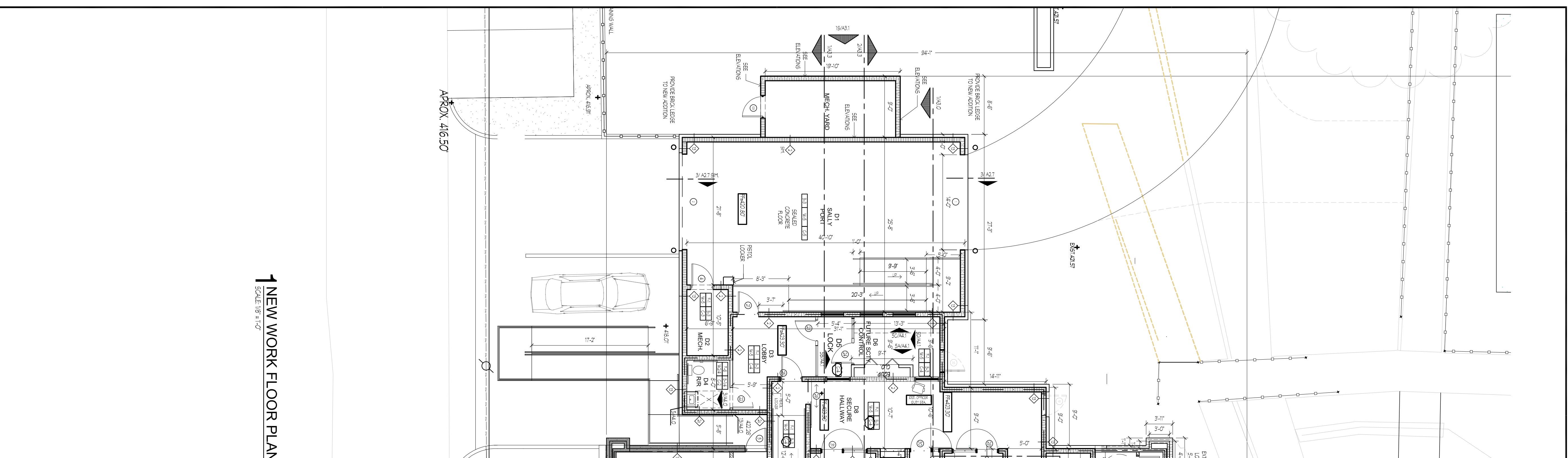
FINISH SCHEDULE

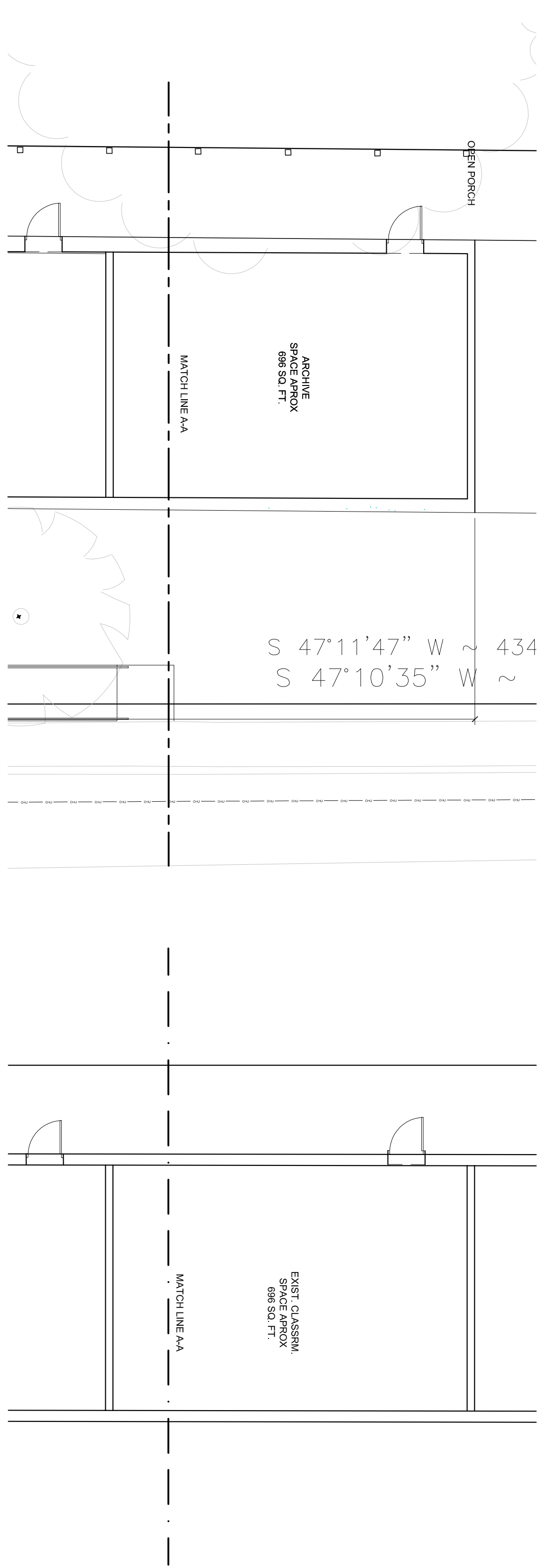
NO.	FLOOR	NO.	BASE	NO.	WALLS	NO.	CEILING	NO.	PAINTS	NO.	TILES & ACCENTS
F-1	VCT-SOLID PATTERNS (COLOR TO BE SELECTED)	B-1	4" SQUARE CONC. BASE	W-1	TYPICAL LIGHT COLORED PBL. PAINT S-2	C-1	5" Z-LAMIN. ACCEST-TILE	P-1	SHERWIN WILLIAMS' SUPERBENT CE-22 (COLOR T.B.D.) HIGH SHIN.	T-1	TSP
F-2	VCT-2.0 DISCREETION	B-2	4" SING. SPLIT-FIELD (COLOR TO BE SELECTED)	W-2	TYPICAL LIGHT COLORED PBL. PAINT S-2	C-2	5" Z-LAMIN. ACCEST-TILE	P-2	SHERWIN WILLIAMS' COLORED T.B.D. HIGH SHIN.	T-2	NOT USED
F-3	VCT-2.0 DISCREETION (TO BE SELECTED)	B-3	4" SING. SPLIT-FIELD (COLOR TO BE SELECTED)	W-3	TYPICAL LIGHT COLORED PBL. PAINT S-2	C-3	STRUCTURE BOND W/ FINISH 1" (SEE A2.2, INT. ELS.)	P-3	SHERWIN WILLIAMS' COLORED T.B.D. HIGH SHIN.		
F-4	VCT-2.0 DISCREETION (TO BE SELECTED)	B-4	4" SING. SPLIT-FIELD (SEE A2.2, INT. ELS.)	W-4	TYPICAL LIGHT COLORED PBL. PAINT S-2	C-4	5" Z-LAMIN. ACCEST-TILE	P-4	SHERWIN WILLIAMS' COLORED T.B.D. HIGH SHIN.		
F-5	TILE CABINET (COLOR S) (TO BE SELECTED)	W-5	SHERWIN WILLIAMS' EPOXY	W-6	CERAMIC WALL STORAGE	C-6	5" Z-LAMIN. ACCEST-TILE	P-5	SHERWIN WILLIAMS' SUPERBENT CE-22 (COLOR T.B.D.) HIGH SHIN.		
F-6	DEWAX TILE (NO. 3, 5, 6, 7) (TO BE SELECTED)	W-6	CERAMIC WALL STORAGE			C-6	5" Z-LAMIN. ACCEST-TILE	P-6	SHERWIN WILLIAMS' SUPERBENT CE-22 (COLOR T.B.D.) HIGH SHIN.		

3RD STREET

Asphalt

Notes:
 ALL FINISHING SHOWN IN PINK
 9" CONC. SUBFLOOR ON EXISTING
 4" CONCRETE ON ALL FLOORS EXCEPT ON PAVES





4 BUILDING FLOOR PLAN D.A. FILE ARCHIVE AREA
SCALE: 1/8" = 1'-0"

3 EXISTING CONDITIONS
SCALE: 1/8" = 1'-0"

SECTION NOTES:

1. REMOVE EXISTING WALLS AND RECONSTRUCT WITH 2" CMU BLOCKWORK WITH 1/2" GYPSUM BOARD ON BOTH SIDES. FINISH WITH 5/8" TYPE-X GYPSUM BOARD ON INTERIOR SIDE. FINISH WITH 1/2" GYPSUM BOARD ON EXTERIOR SIDE. SEE SECTION 05100 FOR FINISHES.
2. REMOVE EXISTING WALLS AND RECONSTRUCT WITH 2" CMU BLOCKWORK WITH 1/2" GYPSUM BOARD ON BOTH SIDES. FINISH WITH 5/8" TYPE-X GYPSUM BOARD ON INTERIOR SIDE. FINISH WITH 1/2" GYPSUM BOARD ON EXTERIOR SIDE. SEE SECTION 05100 FOR FINISHES.
3. REMOVE EXISTING WALLS AND RECONSTRUCT WITH 2" CMU BLOCKWORK WITH 1/2" GYPSUM BOARD ON BOTH SIDES. FINISH WITH 5/8" TYPE-X GYPSUM BOARD ON INTERIOR SIDE. FINISH WITH 1/2" GYPSUM BOARD ON EXTERIOR SIDE. SEE SECTION 05100 FOR FINISHES.
4. REMOVE EXISTING WALLS AND RECONSTRUCT WITH 2" CMU BLOCKWORK WITH 1/2" GYPSUM BOARD ON BOTH SIDES. FINISH WITH 5/8" TYPE-X GYPSUM BOARD ON INTERIOR SIDE. FINISH WITH 1/2" GYPSUM BOARD ON EXTERIOR SIDE. SEE SECTION 05100 FOR FINISHES.
5. REMOVE EXISTING WALLS AND RECONSTRUCT WITH 2" CMU BLOCKWORK WITH 1/2" GYPSUM BOARD ON BOTH SIDES. FINISH WITH 5/8" TYPE-X GYPSUM BOARD ON INTERIOR SIDE. FINISH WITH 1/2" GYPSUM BOARD ON EXTERIOR SIDE. SEE SECTION 05100 FOR FINISHES.
6. REMOVE EXISTING WALLS AND RECONSTRUCT WITH 2" CMU BLOCKWORK WITH 1/2" GYPSUM BOARD ON BOTH SIDES. FINISH WITH 5/8" TYPE-X GYPSUM BOARD ON INTERIOR SIDE. FINISH WITH 1/2" GYPSUM BOARD ON EXTERIOR SIDE. SEE SECTION 05100 FOR FINISHES.
7. REMOVE EXISTING WALLS AND RECONSTRUCT WITH 2" CMU BLOCKWORK WITH 1/2" GYPSUM BOARD ON BOTH SIDES. FINISH WITH 5/8" TYPE-X GYPSUM BOARD ON INTERIOR SIDE. FINISH WITH 1/2" GYPSUM BOARD ON EXTERIOR SIDE. SEE SECTION 05100 FOR FINISHES.
8. REMOVE EXISTING WALLS AND RECONSTRUCT WITH 2" CMU BLOCKWORK WITH 1/2" GYPSUM BOARD ON BOTH SIDES. FINISH WITH 5/8" TYPE-X GYPSUM BOARD ON INTERIOR SIDE. FINISH WITH 1/2" GYPSUM BOARD ON EXTERIOR SIDE. SEE SECTION 05100 FOR FINISHES.
9. REMOVE EXISTING WALLS AND RECONSTRUCT WITH 2" CMU BLOCKWORK WITH 1/2" GYPSUM BOARD ON BOTH SIDES. FINISH WITH 5/8" TYPE-X GYPSUM BOARD ON INTERIOR SIDE. FINISH WITH 1/2" GYPSUM BOARD ON EXTERIOR SIDE. SEE SECTION 05100 FOR FINISHES.
10. REMOVE EXISTING WALLS AND RECONSTRUCT WITH 2" CMU BLOCKWORK WITH 1/2" GYPSUM BOARD ON BOTH SIDES. FINISH WITH 5/8" TYPE-X GYPSUM BOARD ON INTERIOR SIDE. FINISH WITH 1/2" GYPSUM BOARD ON EXTERIOR SIDE. SEE SECTION 05100 FOR FINISHES.

FINISH SCHEDULE

LEGEND

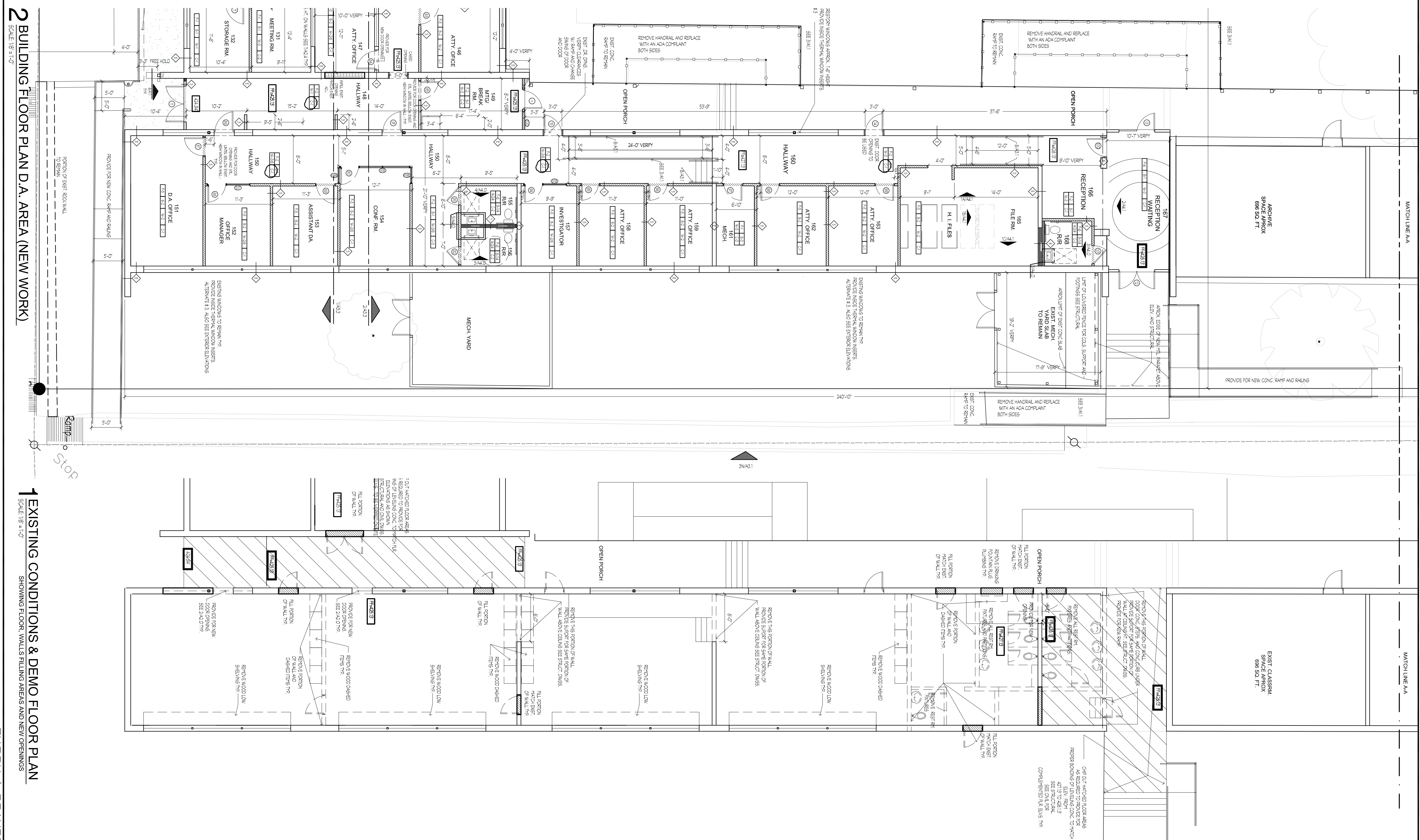
FLOOR	EX	INT	WALL	CEILING
F-1	EX	INT	WALL	CEILING
F-2	EX	INT	WALL	CEILING
F-3	EX	INT	WALL	CEILING
F-4	EX	INT	WALL	CEILING
F-5	EX	INT	WALL	CEILING
F-6	EX	INT	WALL	CEILING

FINISH SCHEDULE

NO.	FLOOR	NO.	BASE	NO.	WALLS	NO.	CEILING	NO.	PAINTS	NO.	TILES & ACCENTS
F-1	CONCRETE TO BE SELECTED	B-1	4" EPS/ST. CONCRETE	W-1	1" TYPE-X GYPSUM BOARD	C-1	2" X 2" LUMEN ACoustic TILE	P-1	SEPRIM W/UNDER SEPRIMANT OR EQ. COAT. (1.5) FISH-SKIN	T-1	1" x 1" T&G
F-2	CONCRETE TO BE SELECTED	B-2	1" FINE AGG. FILL	W-2	1" TYPE-X GYPSUM BOARD	C-2	1" X 1" LUMEN ACoustic TILE	P-2	SEPRIM W/UNDER SEPRIMANT OR EQ. COAT. (1.5) FISH-SKIN	T-2	1" x 1" T&G
F-3	CONCRETE TO BE SELECTED	B-3	1" FINE AGG. FILL	W-3	1" TYPE-X GYPSUM BOARD	C-3	1" X 1" LUMEN ACoustic TILE	P-3	SEPRIM W/UNDER SEPRIMANT OR EQ. COAT. (1.5) FISH-SKIN		
F-4	CONCRETE TO BE SELECTED	B-4	1" FINE AGG. FILL	W-4	1" TYPE-X GYPSUM BOARD	C-4	1" X 1" LUMEN ACoustic TILE	P-4	SEPRIM W/UNDER SEPRIMANT OR EQ. COAT. (1.5) FISH-SKIN		
F-5	CONCRETE TO BE SELECTED	B-5	1" FINE AGG. FILL	W-5	1" TYPE-X GYPSUM BOARD	C-5	1" X 1" LUMEN ACoustic TILE	P-5	SEPRIM W/UNDER SEPRIMANT OR EQ. COAT. (1.5) FISH-SKIN		
F-6	CONCRETE TO BE SELECTED	B-6	1" FINE AGG. FILL	W-6	1" TYPE-X GYPSUM BOARD	C-6	1" X 1" LUMEN ACoustic TILE	P-6	SEPRIM W/UNDER SEPRIMANT OR EQ. COAT. (1.5) FISH-SKIN		

NOTES:

1. REMOVE EXISTING WALLS AND RECONSTRUCT WITH 2" CMU BLOCKWORK WITH 1/2" GYPSUM BOARD ON BOTH SIDES. FINISH WITH 5/8" TYPE-X GYPSUM BOARD ON INTERIOR SIDE. FINISH WITH 1/2" GYPSUM BOARD ON EXTERIOR SIDE. SEE SECTION 05100 FOR FINISHES.
2. REMOVE EXISTING WALLS AND RECONSTRUCT WITH 2" CMU BLOCKWORK WITH 1/2" GYPSUM BOARD ON BOTH SIDES. FINISH WITH 5/8" TYPE-X GYPSUM BOARD ON INTERIOR SIDE. FINISH WITH 1/2" GYPSUM BOARD ON EXTERIOR SIDE. SEE SECTION 05100 FOR FINISHES.



2 BUILDING FLOOR PLAN D.A. AREA (NEW WORK)
SCALE: 1/8" = 1'-0"

1 EXISTING CONDITIONS & DEMO FLOOR PLAN
SCALE: 1/8" = 1'-0"

THORN + GRAVES ARCHITECTS

105 MONTCLAIR • ALAMO HEIGHTS, TX 78209 • PHONE: 210-222-0154 • FAX: 210-222-0155

WILSON COUNTY

CRIMINAL JUSTICE CENTER

EXISTING CAMPUS BUILDING RETROFIT & FINISH-OUT

1103 4TH. STREET, FLORESVILLE, TX. 78114

North

SHEET NO.: **A2.2**

PROJECT NO.: 1221

DATE: 07.19.2013

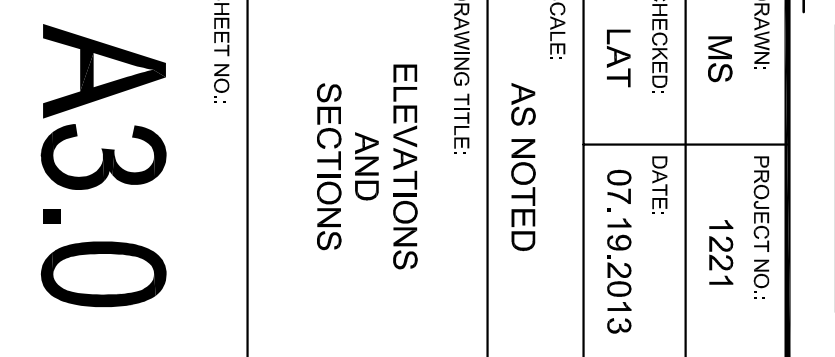
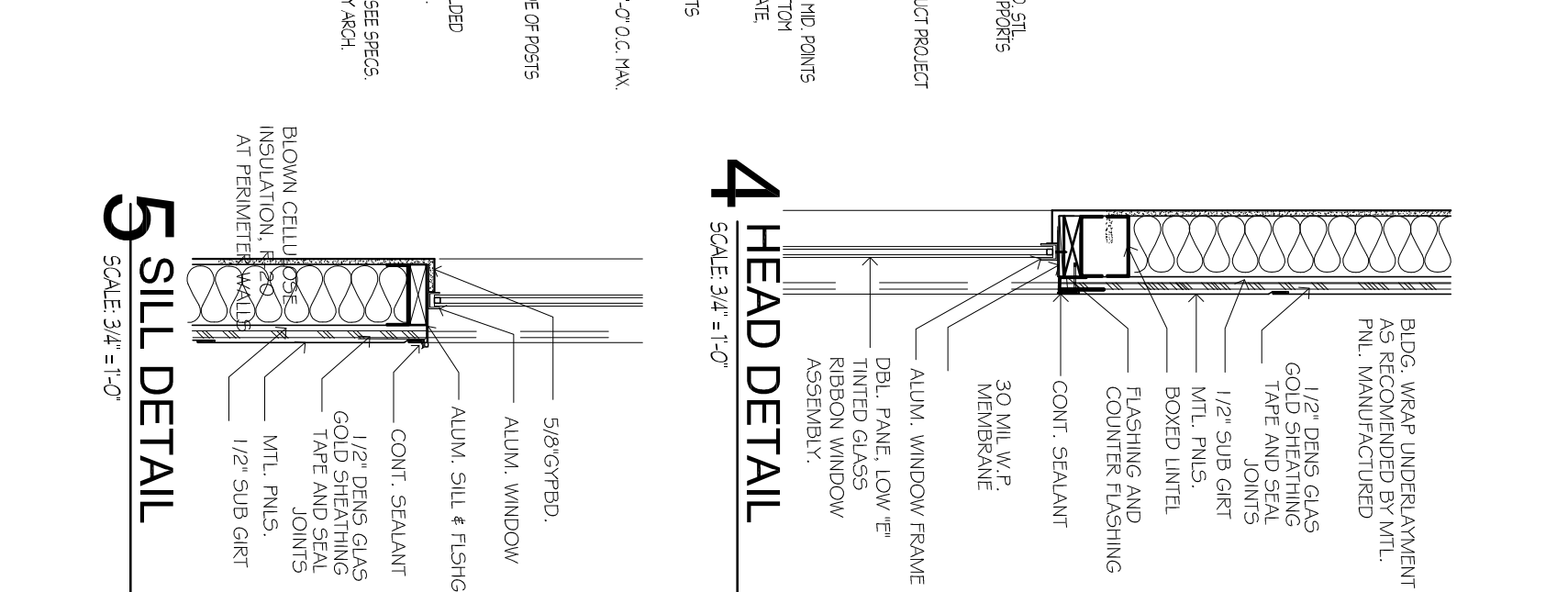
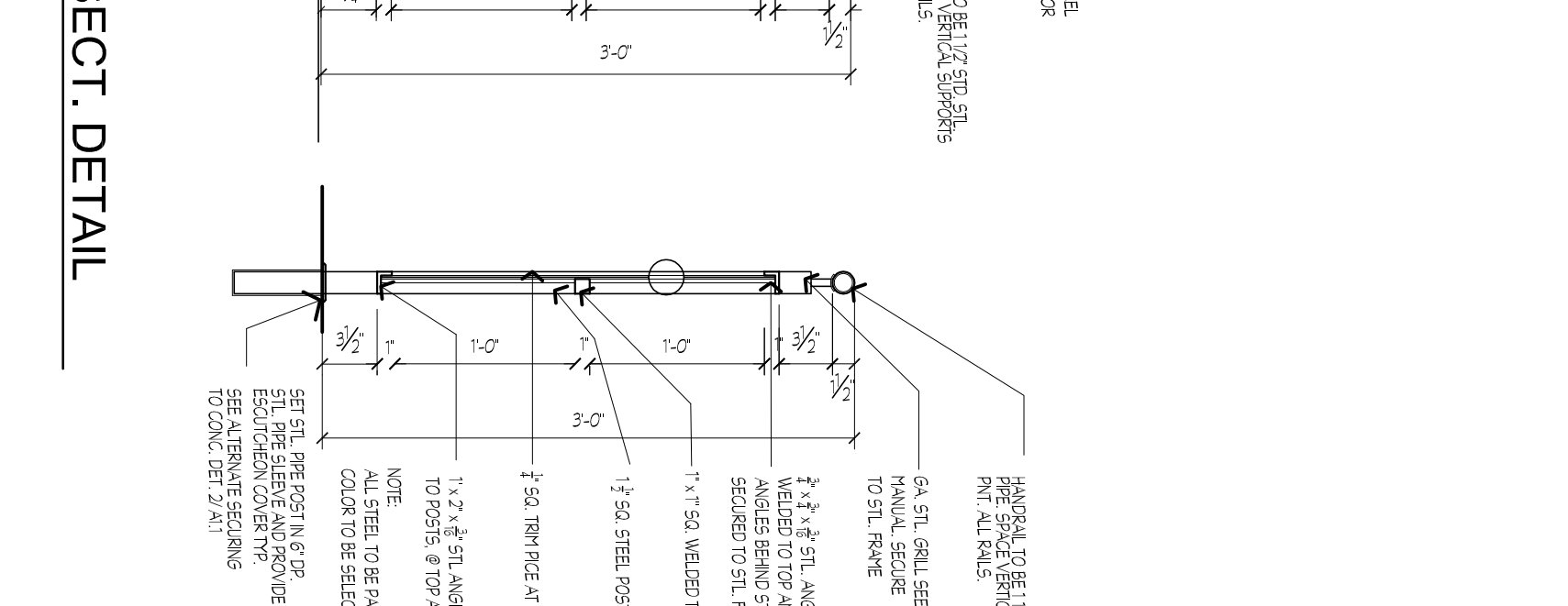
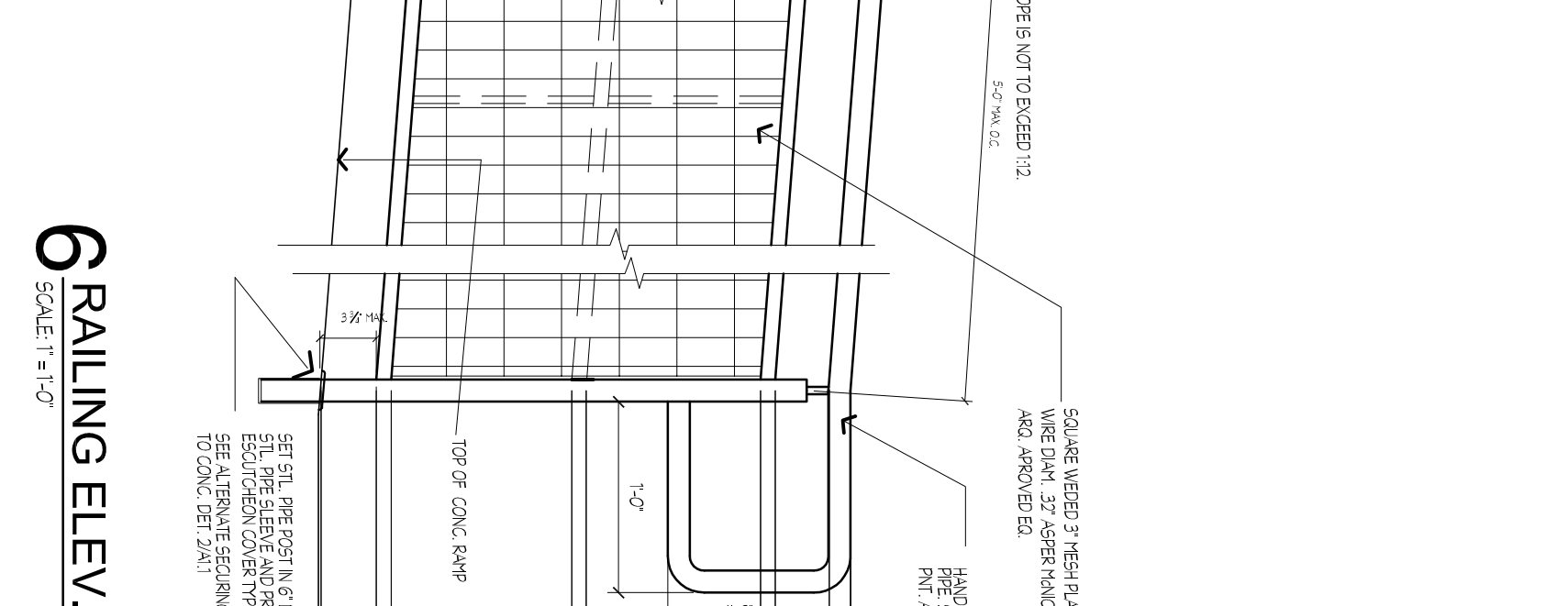
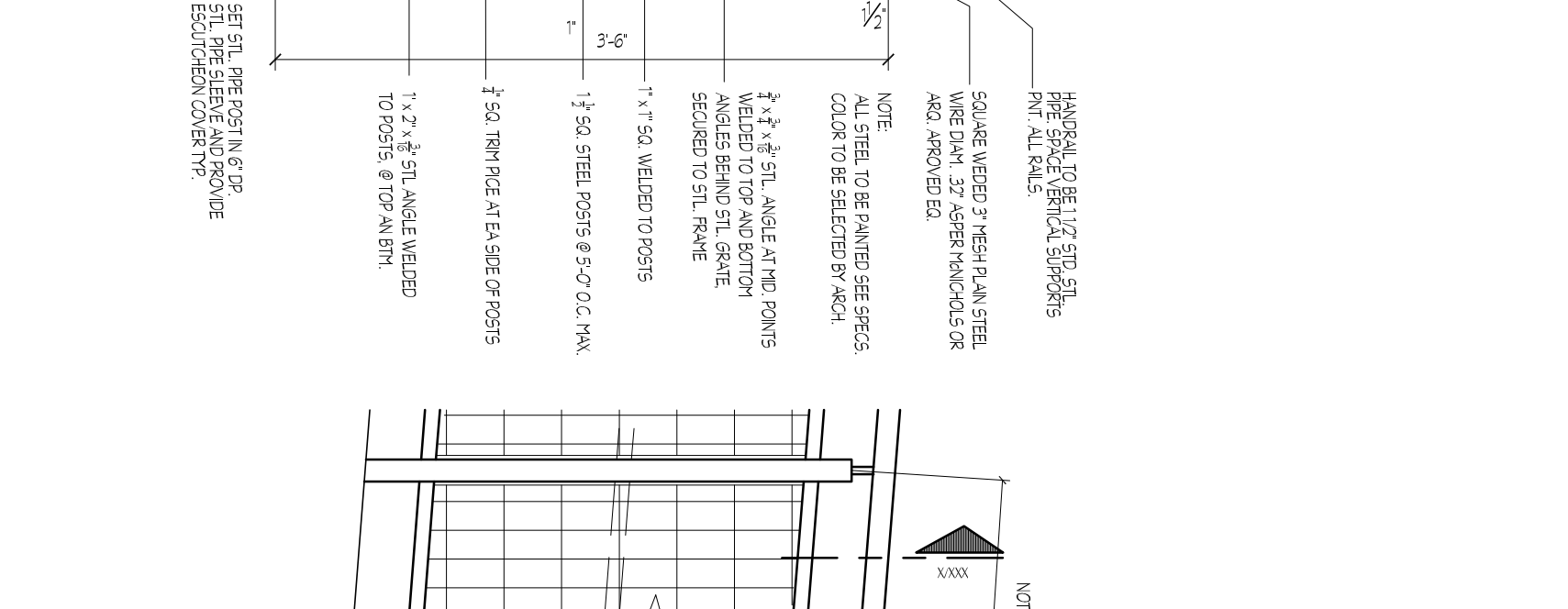
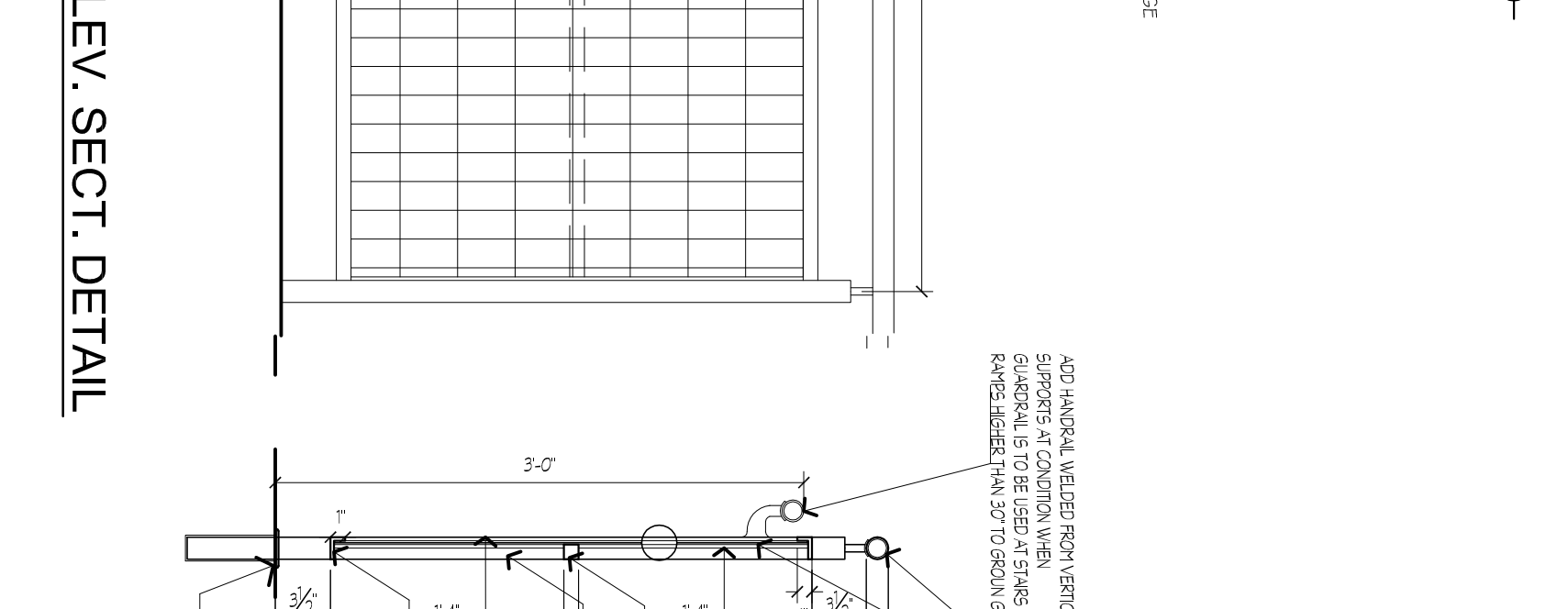
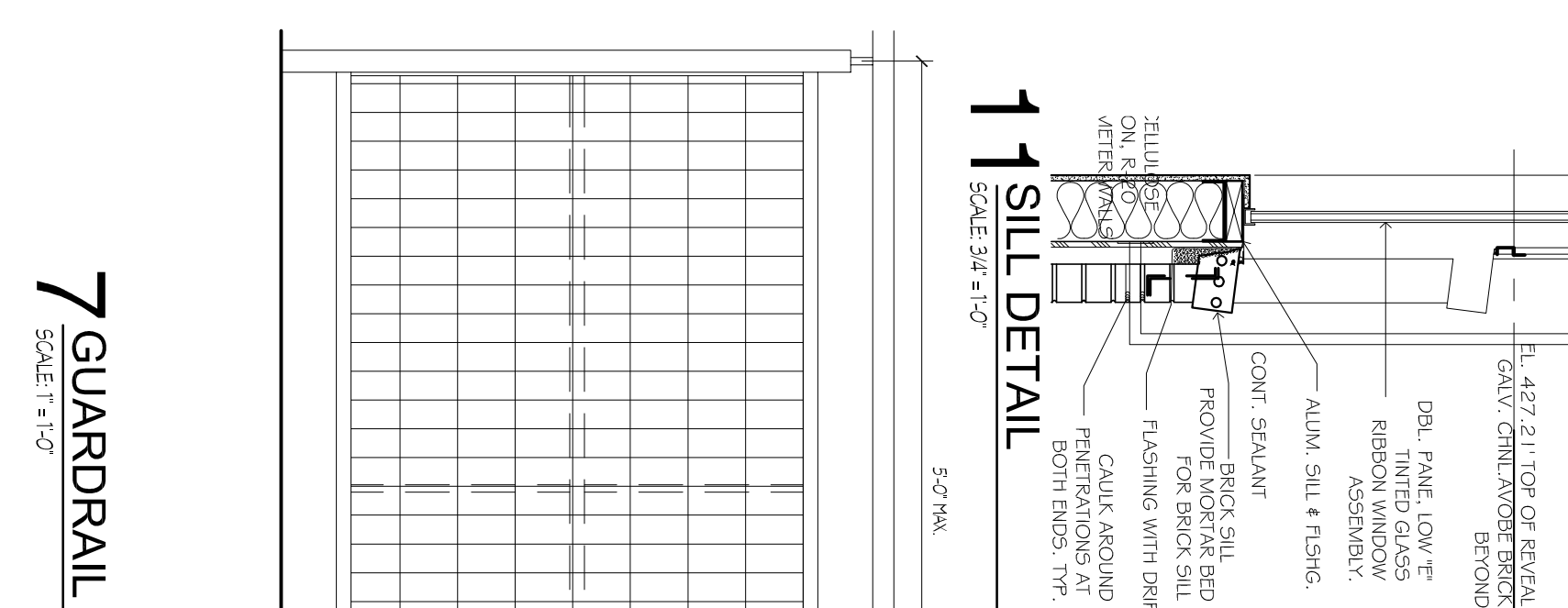
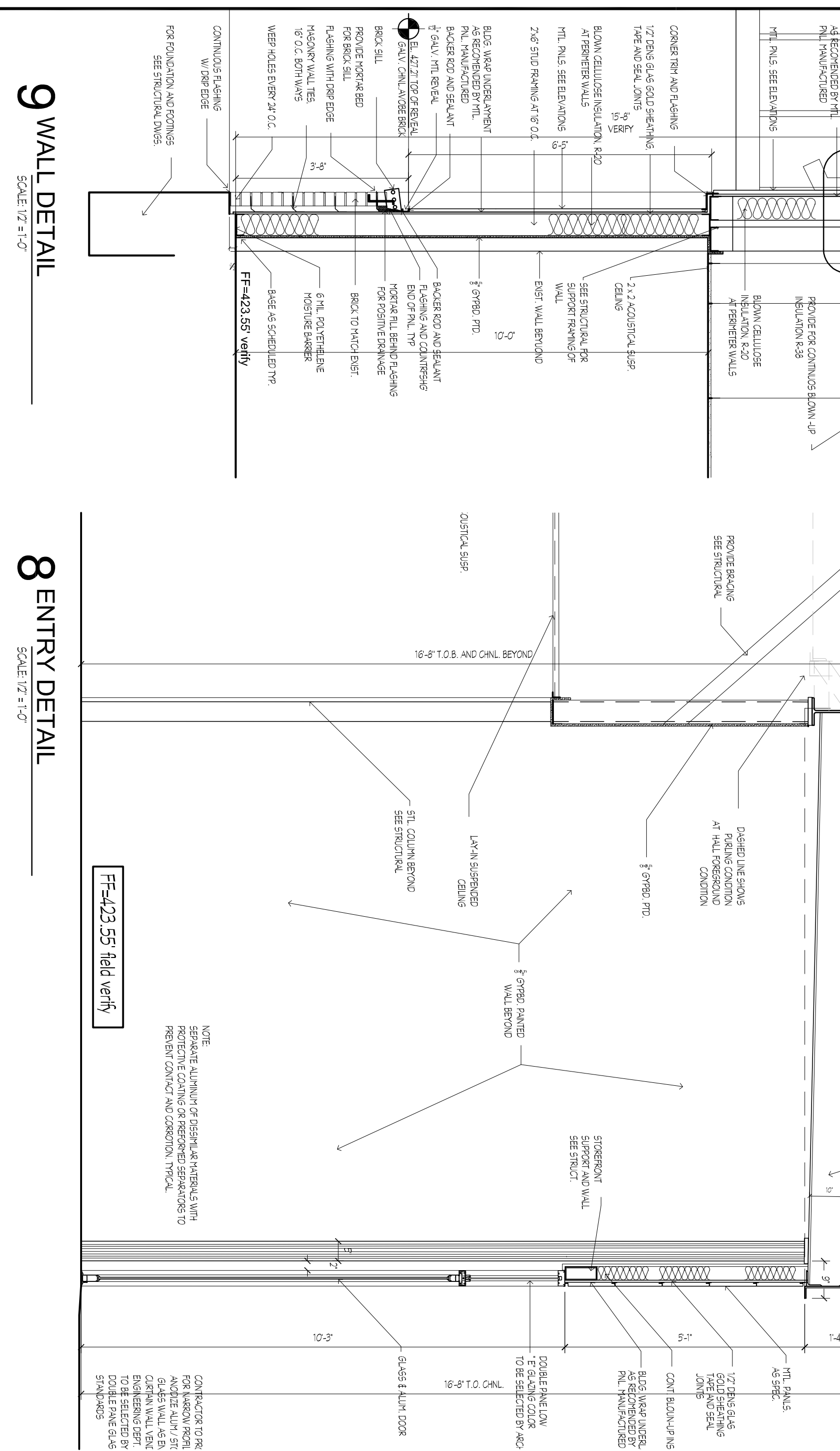
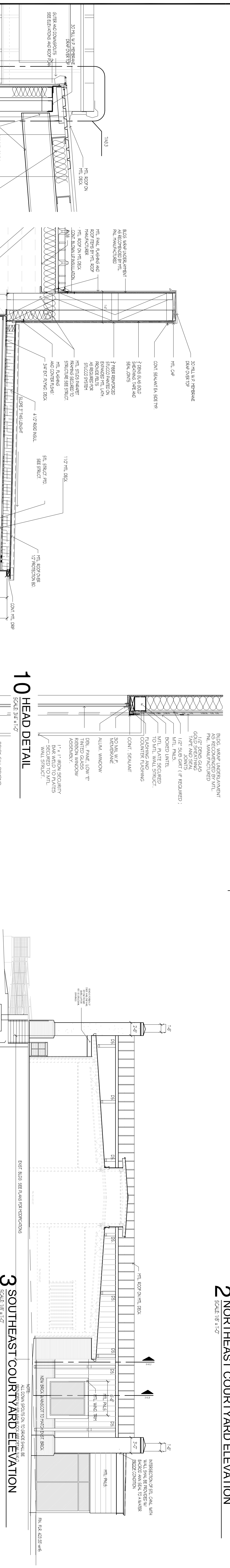
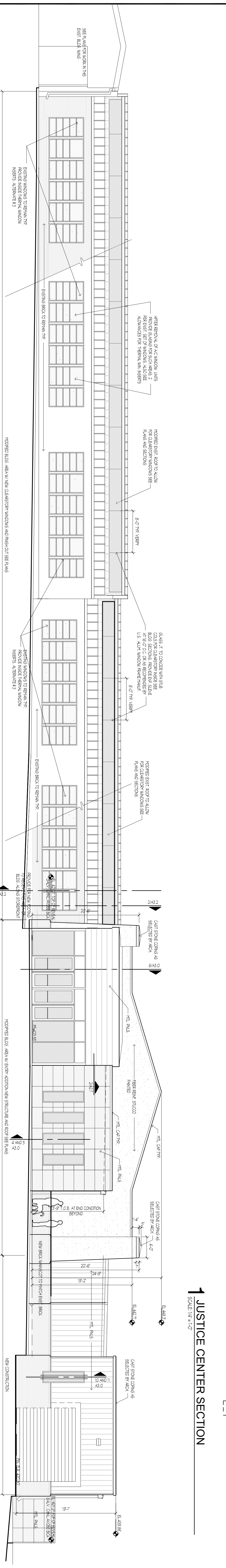
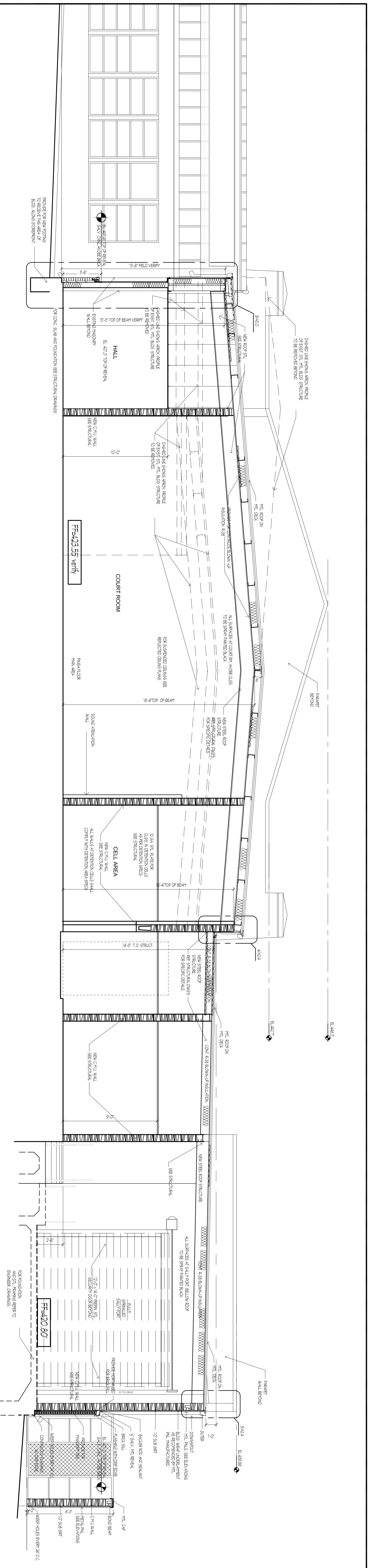
SCALE: AS NOTED

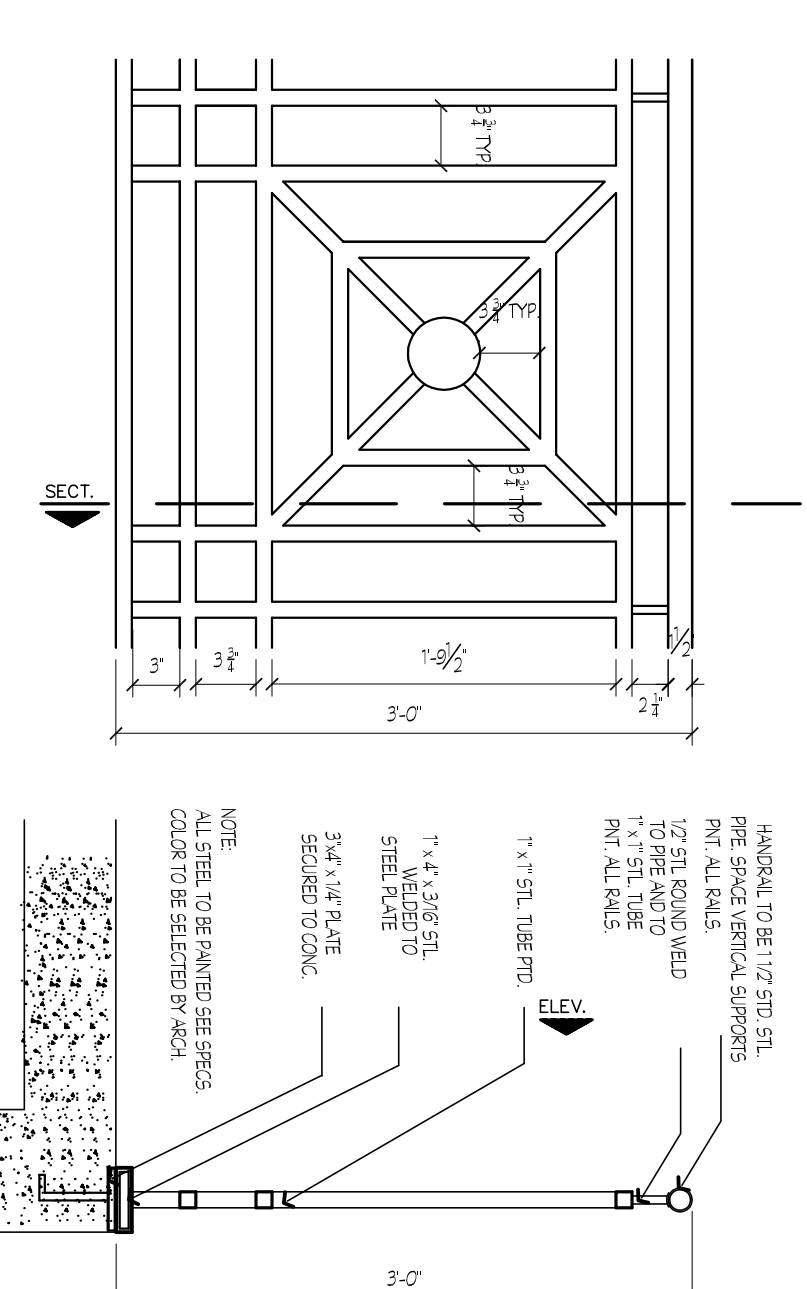
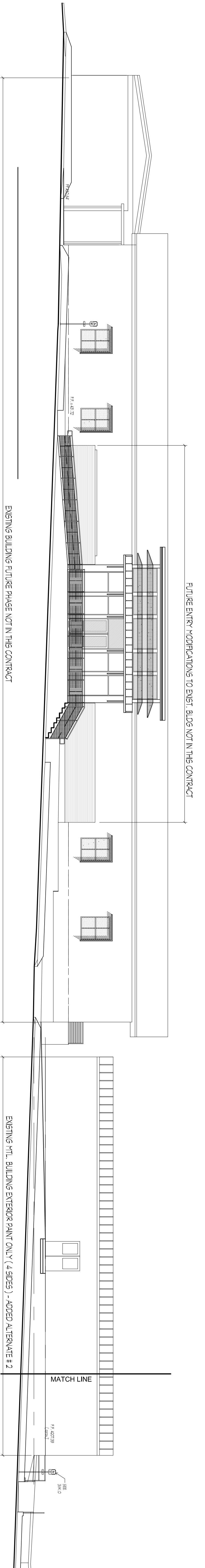
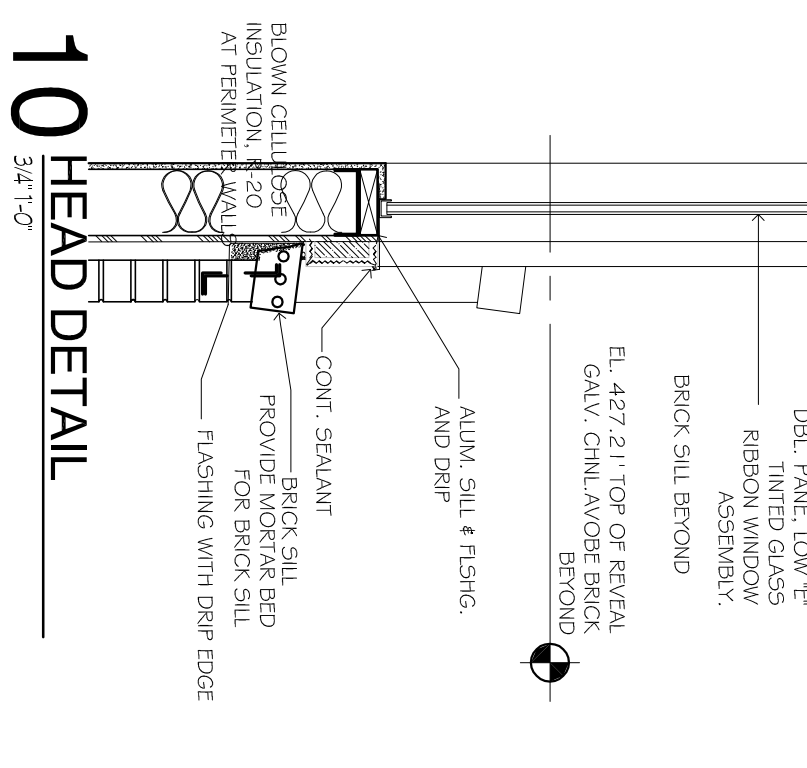
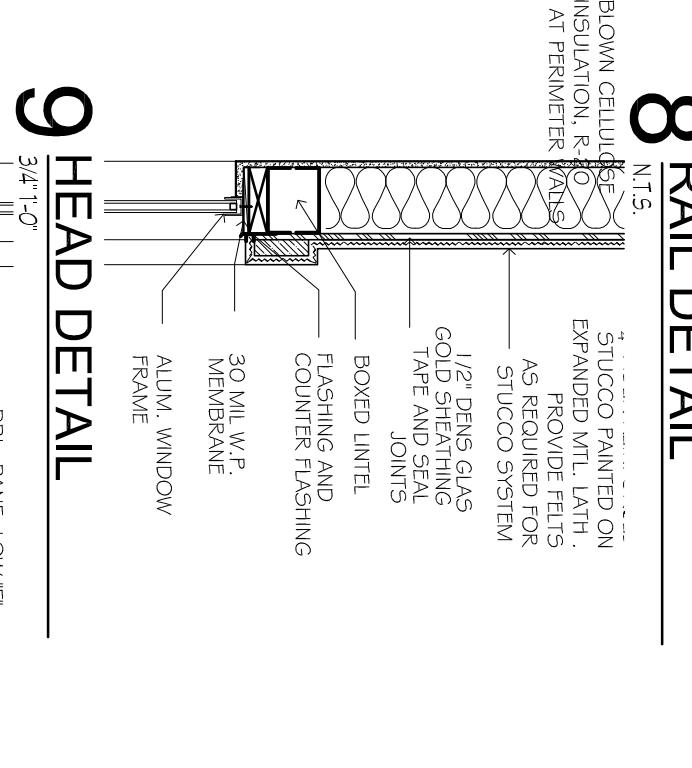
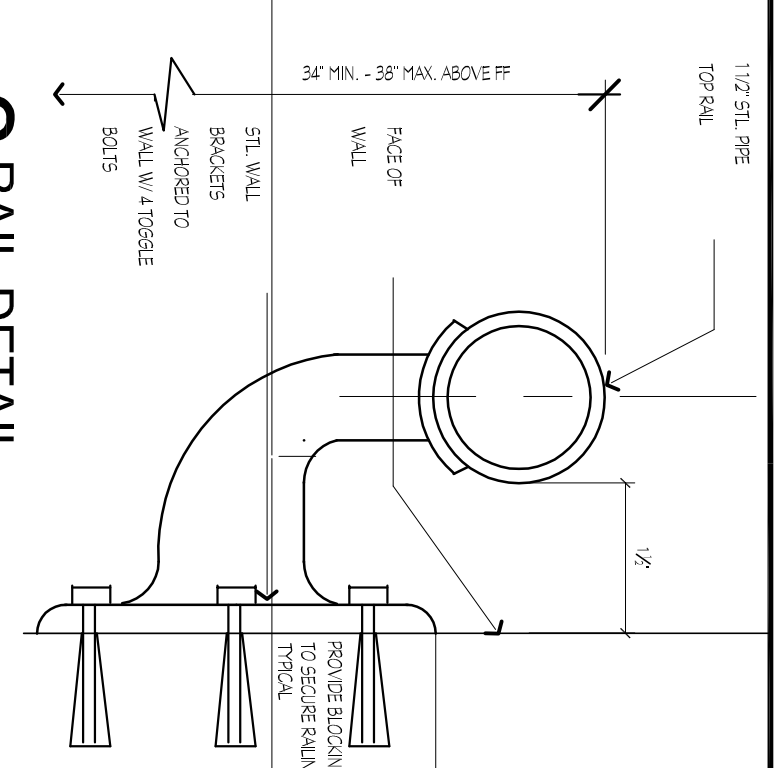
PRELIMINARY FOR PRICING ONLY

PROJECT NO.: 1221

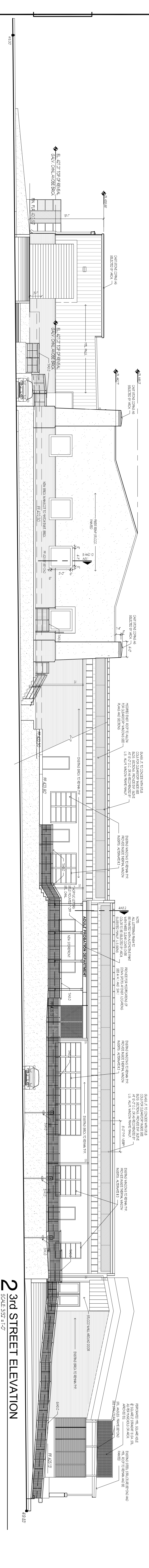
DATE: 07.19.2013

SCALE: AS NOTED

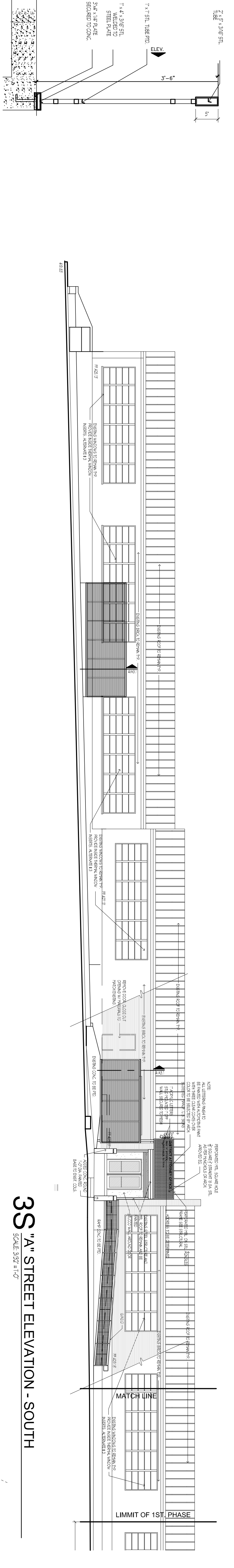




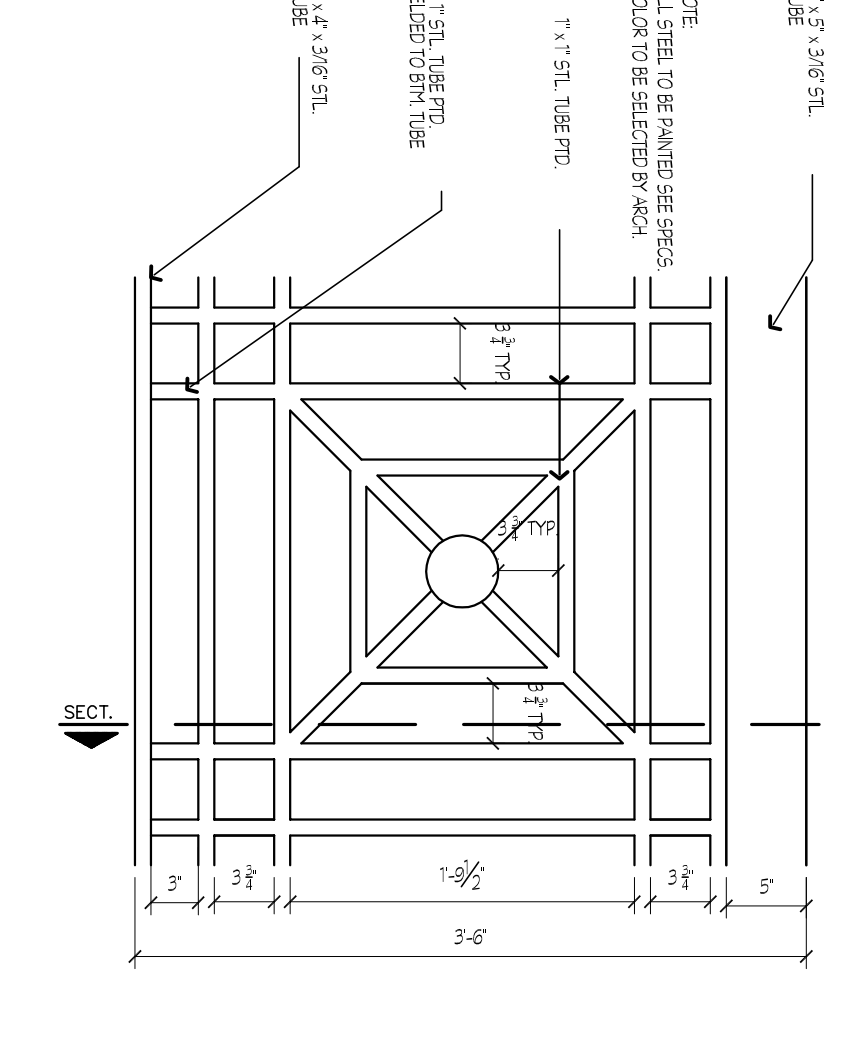
7 RAILING DETAIL ELEVATION SECT.
SCALE: 3/32" = 1'-0"



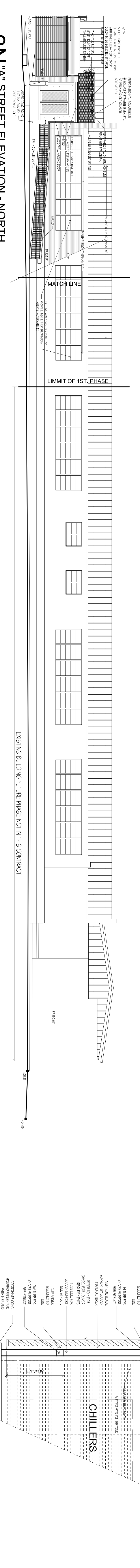
2 3rd STREET ELEVATION
SCALE: 3/32" = 1'-0"



3S 'A' STREET ELEVATION - SOUTH
SCALE: 3/32" = 1'-0"

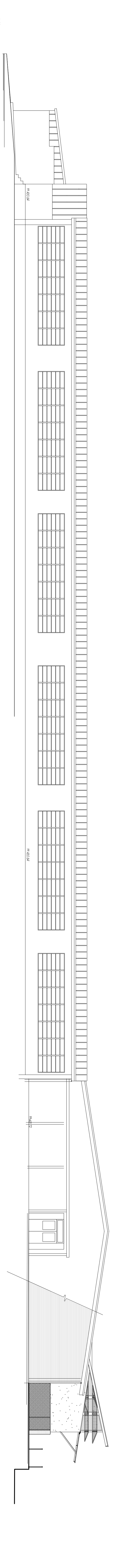
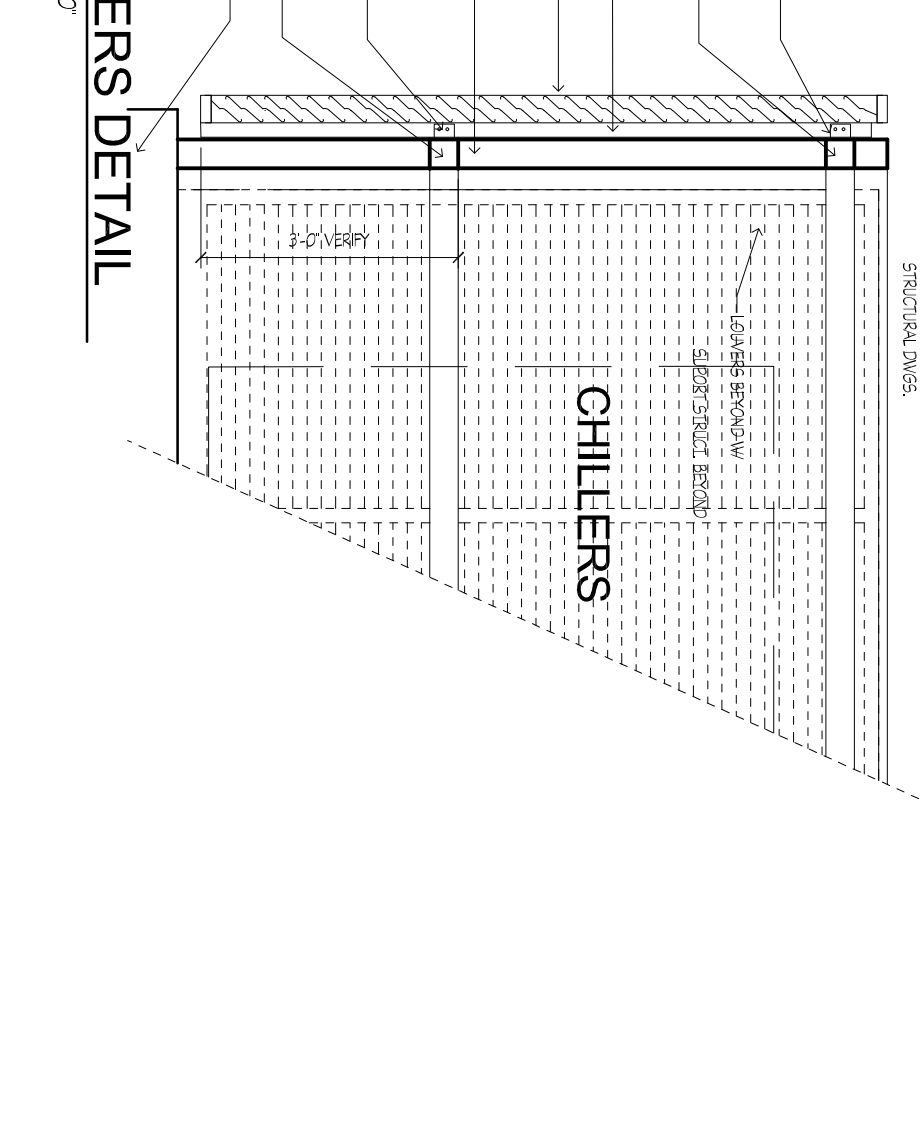


6 RAILING GUARD DETAIL ELEVATION SECT.
SCALE: 3/32" = 1'-0"



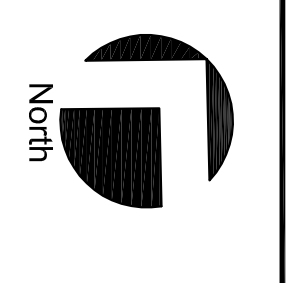
3N 'A' STREET ELEVATION - NORTH
SCALE: 3/32" = 1'-0"

4 LOUVERS DETAIL
SCALE: 1/2" = 1'-0"



5 4th STREET ELEVATION
SCALE: 3/32" = 1'-0"

This document © 2013 THORN + GRAVES. Reproduction in whole or part without written authorization of THORN + GRAVES ARCHITECTS is prohibited.



WILSON COUNTY
CRIMINAL JUSTICE CENTER
 EXISTING CAMPUS BUILDING RETROFIT & FINISH-OUT
 1103 4TH. STREET, FLORESVILLE, TX. 78114

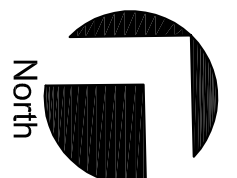
THORNGRAVES
 ARCHITECTS PLANNERS INTERIORS
 105 MONTCLAIR • ALAMO HEIGHTS, TX 78209 • PHONE: 210-222-0154 • FAX: 210-222-0155

NO.	REVISIONS/DATE
AD3	08-06-2013
AD2	08-06-2013
AD1	08-06-2013

PRELIMINARY FOR PRICING ONLY

DATE:	07.18.2013
PROJECT NO:	1221
SCALE:	AS NOTED
DRAWING TITLE:	SITE ELEVATIONS

SHEET NO.: **A3.1**



WILSON COUNTY
SAM FORE, JR. PUBLIC LIBRARY
 EXISTING CAMPUS, BUILDING RETROFIT & FINISH-OUT
 1103 4TH. STREET, FLORESVILLE, TX. 78114

THORNGRAVES
 ARCHITECTS PLANNERS INTERIORS

105 MONTCLAIR • ALAMO HEIGHTS, TX. 78209 • PHONE: 210-222-0154 • FAX: 210-222-0156

PRELIMINARY,
 NOT FOR
 CONSTRUCTION

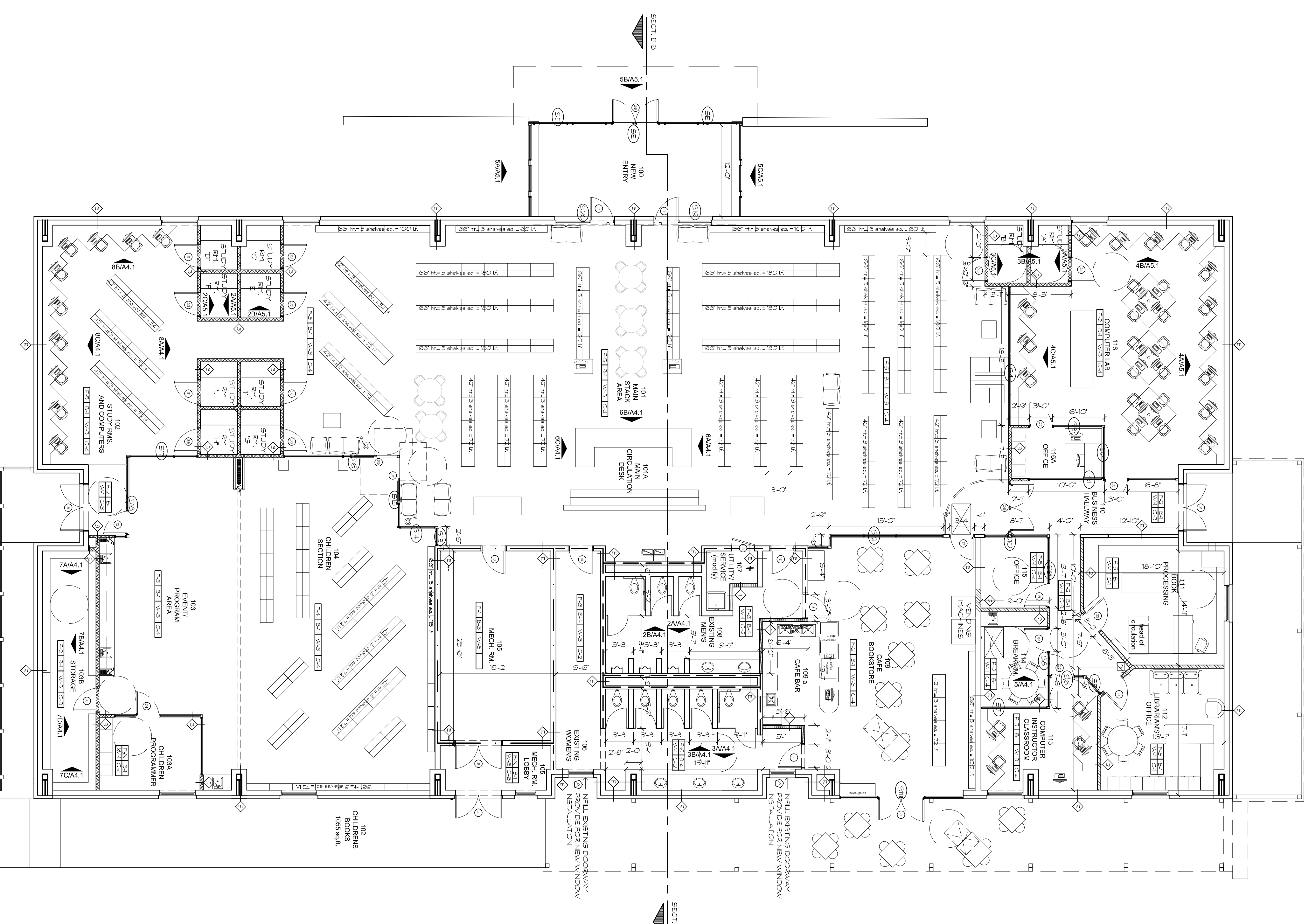
PROJECT NO:
 1228

DATE:
 09.18.2013

SCALE:
 AS NOTED

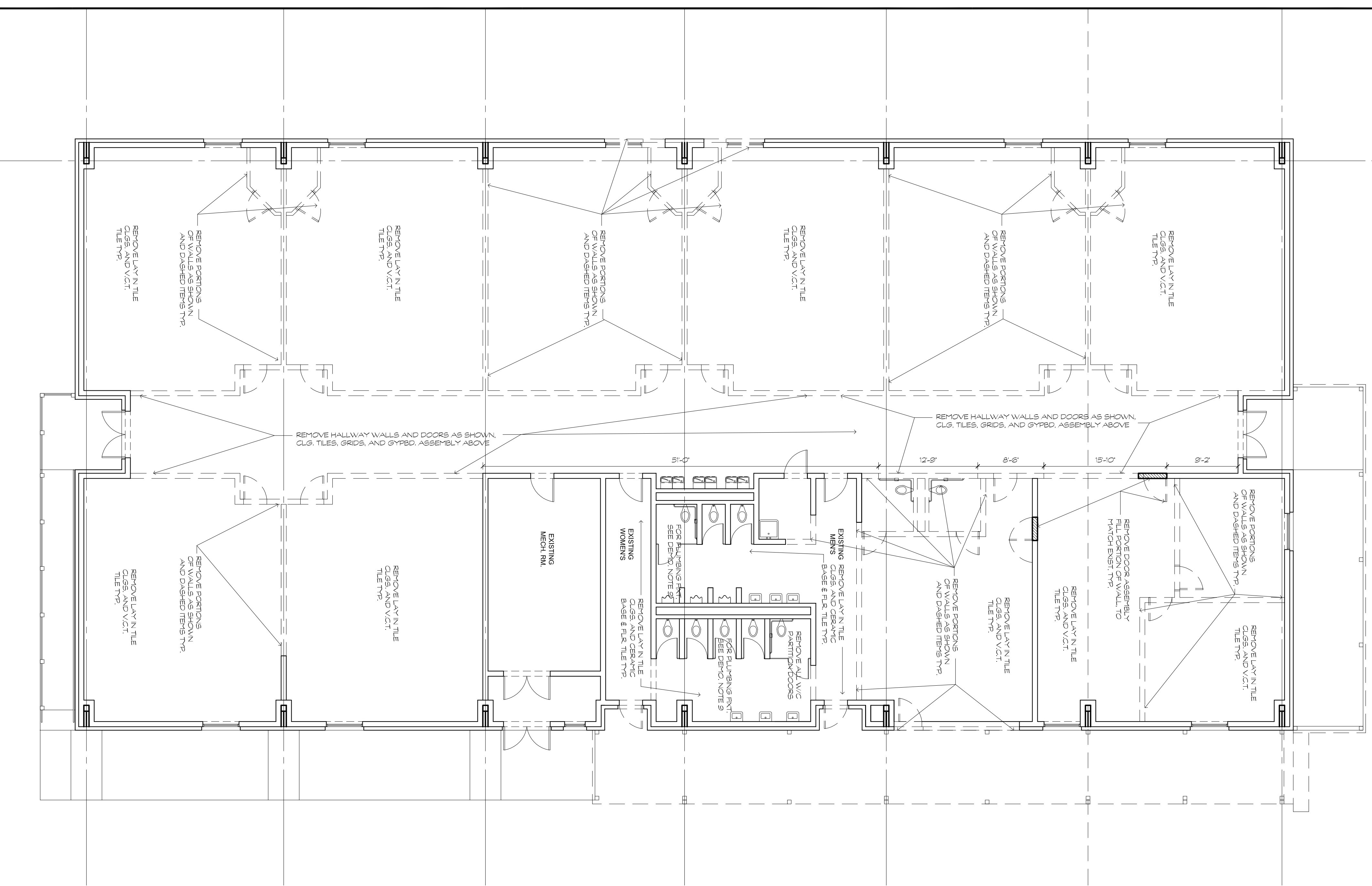
DRAWING TITLE:
 BLDG. 100
 LIBRARY
 FLOOR PLAN

SHEET NO.:
A2.1



- NOTES:**
1. ALL FURNITURE SHOWN IN PLANS IS FOR REFERENCE ONLY. N.C. IS EXCEPT FOR TILL WORK DETAIL ON P.2.
 2. ALL CASE BAR COUNTERS AND EQUIPMENT NOT IN CONTRACT. PLUMBING FOR SINKS ONLY.

2 BUILDING 100 NEW WORK FLOOR PLAN
 SCALE: 1/8" = 1'-0"



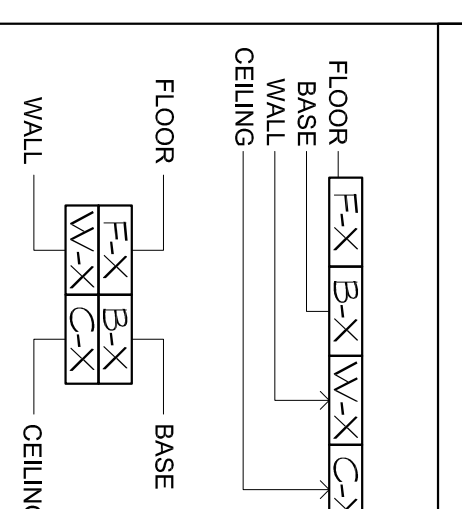
1 BUILDING 100 EXISTING CONDITIONS & DEMO PLAN
 SCALE: 1/8" = 1'-0"

1. ALL FURNITURE SHOWN IN PLANS IS FOR REFERENCE ONLY. N.C. IS EXCEPT FOR TILL WORK DETAIL ON P.2.
 2. ALL CASE BAR COUNTERS AND EQUIPMENT NOT IN CONTRACT. PLUMBING FOR SINKS ONLY.

FINISH SCHEDULE

NO.	FLOOR	NO.	BASE	NO.	WALLS	NO.	CEILING	NO.	PAINTS	NO.	TILES & ACCENTS
F-1	VCT - SOLID PATTERN (COLOR TO BE SELECTED)	B-1	4" RIBBER COVER BASE	W-1	TEXTURE LIGHT ORANGE PEEL PAINT P-2	C-1	2" X 2" LAY-IN ACoustIC TILE	P-1	SHERWIN WILLIAMS COLOR (T.B.D.) FINISH B&N	T-1	TBD
F-2	VCT-3X COLOR PATTERN (TO BE SELECTED)	B-2	4" RIBBER BASE MOLD. (COLOR TO BE SELECTED)	W-2	TEXTURE LIGHT ORANGE PEEL PAINT P-2	C-2	2" X 4" LAY-IN ACoustIC TILE VINYL FACE	P-2	SHERWIN WILLIAMS COLOR (T.B.D.) FINISH B&N	T-2	NOT USED
F-3	VCT-3X COLOR PATTERN (TO BE SELECTED)	B-3	CLEAR GLOSS BEHNT PAINT OR EC	W-3	TEXTURE LIGHT ORANGE PEEL PAINT EPOXY PAINT	C-3	STRUCTURE ACOUSTIC INSULATION	P-3	SHERWIN WILLIAMS COLOR (T.B.D.) FINISH B&N		
F-4	VCT-6X COLOR PATTERN (TO BE SELECTED)	B-4	CERAMIC TILE BASE (SEE A-25 - INT ELEV.)	W-4	CERAMIC TILE	C-4	GRP. BD. (COLORS) (SEE R-27 - DETAILS)	P-4	SHERWIN WILLIAMS COLOR (T.B.D.) FINISH B&N		
F-5	TILE CABINET - (COLORS) (TO BE SELECTED)			W-5	SHERWIN WILLIAMS EPOXY	C-5	STRUCTURE ACOUSTIC INSULATION	P-5	SHERWIN WILLIAMS COLOR (T.B.D.) FINISH B&N		
F-6	CERAMIC TILE (NON-SLIPPERY)			W-6	CURTAIN WALL/STOERFRONT	C-6	GRP. BD.	P-6	SHERWIN WILLIAMS COLOR (T.B.D.) FINISH B&N		

FINISH SCHEDULE LEGEND





WILSON COUNTY COURTHOUSE PHASE II
INTERIOR FINISHOUT REHABILITATION
 1420 3RD STREET
 FLORESVILLE, TX. 78114

THORNGRAVES
 ARCHITECTS PLANNERS INTERIORS
 105 MONTCLAIR • ALAMO HEIGHTS, TX 78209 • PHONE: 210-222-0154 • FAX: 210-222-0155

NO.	REVISIONS DATE

PRELIMINARY,
 NOT FOR
 CONSTRUCTION

PROJECT NO: 1302

DATE: 08.08.2013

SCALE: AS NOTED

DRAWING TITLE:
 NEW WORK
 FLOOR PLANS

SHEET NO: A2.2

THORN + GRAVES ARCHITECTS

This document © 2013 THORN + GRAVES. Reproduction in whole or part without written authorization of THORN + GRAVES ARCHITECTS is prohibited.

